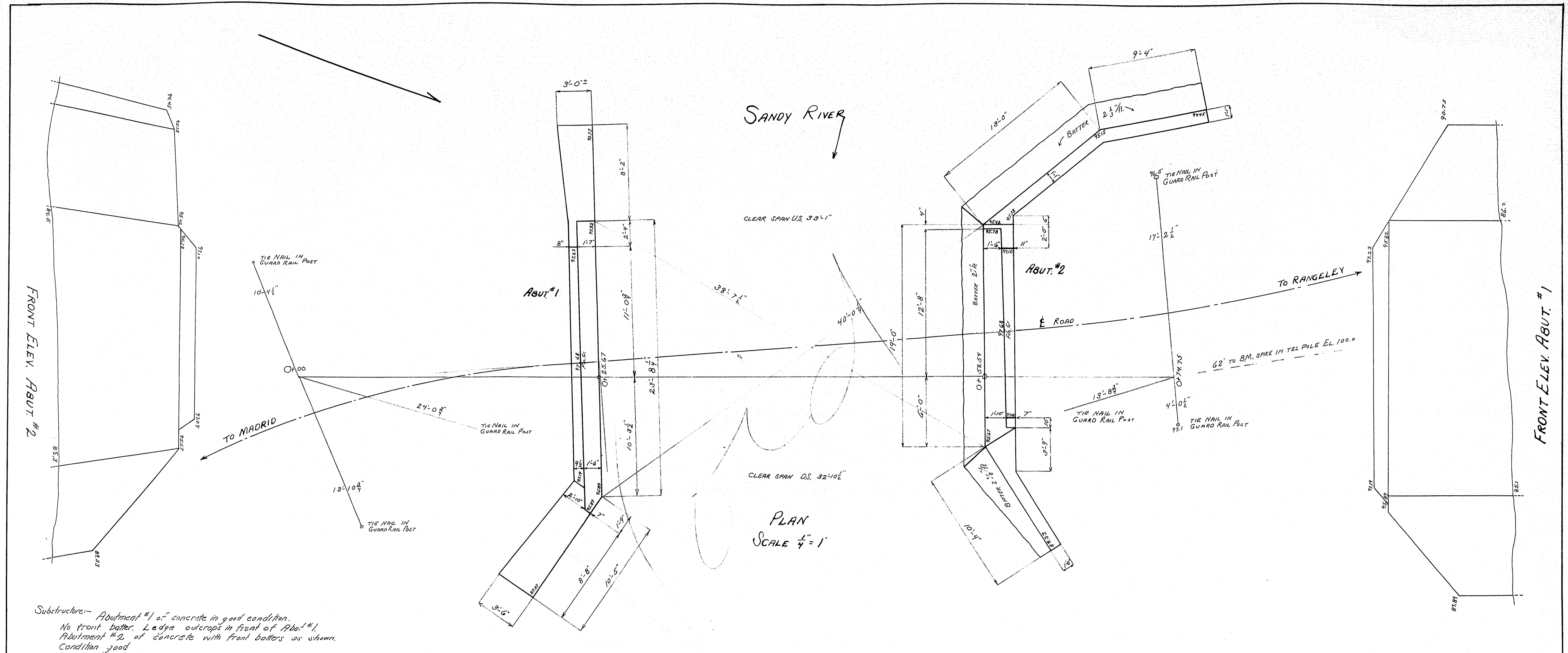
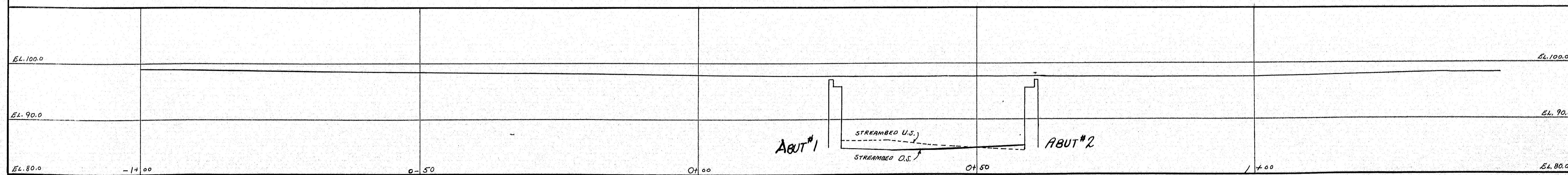


SURVEY - FOUKENWORTH
PLAN - HODGINS



PROFILE & ROAD
SCALES - HOR. & VERT. 1" = 10'

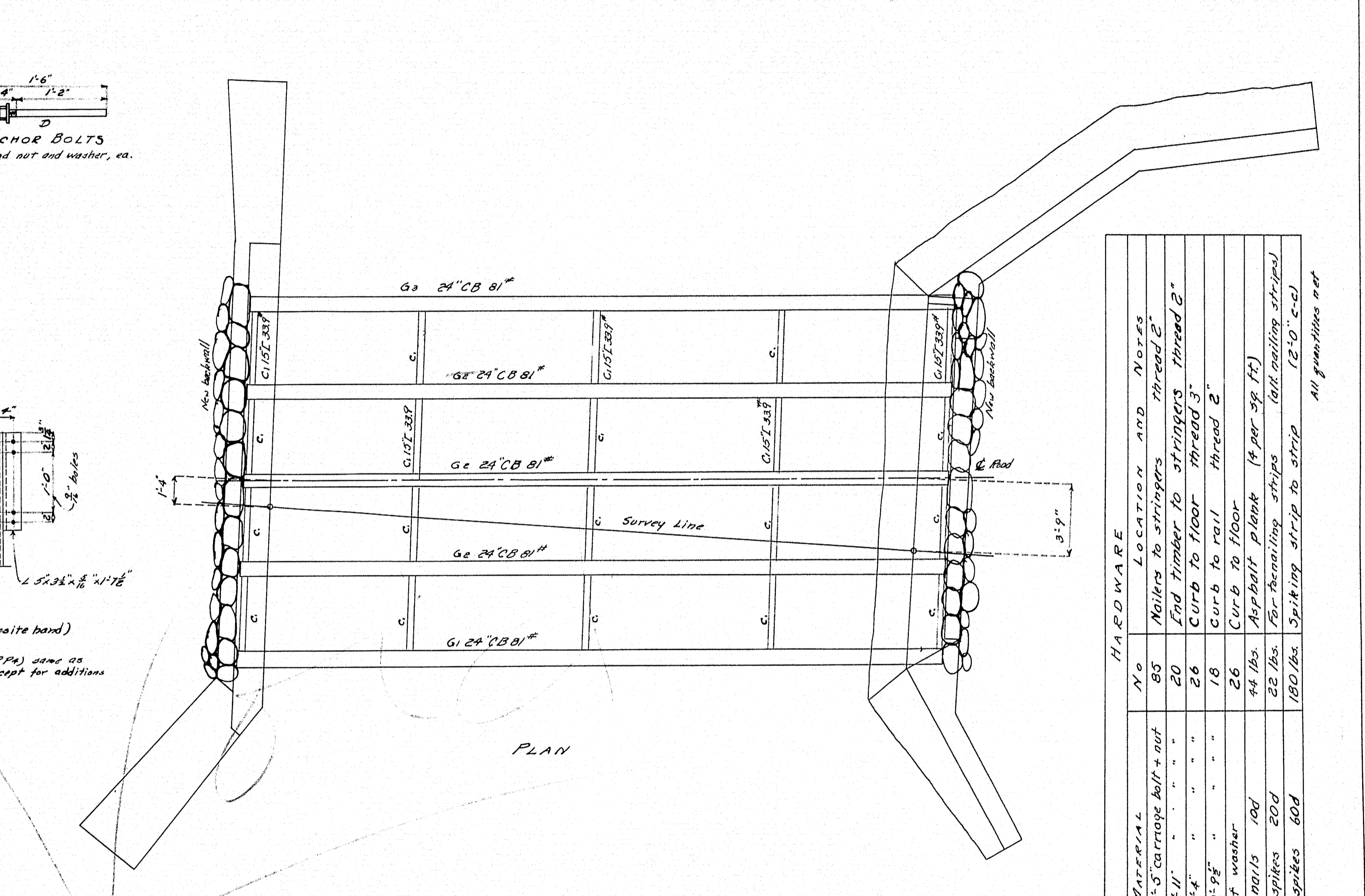
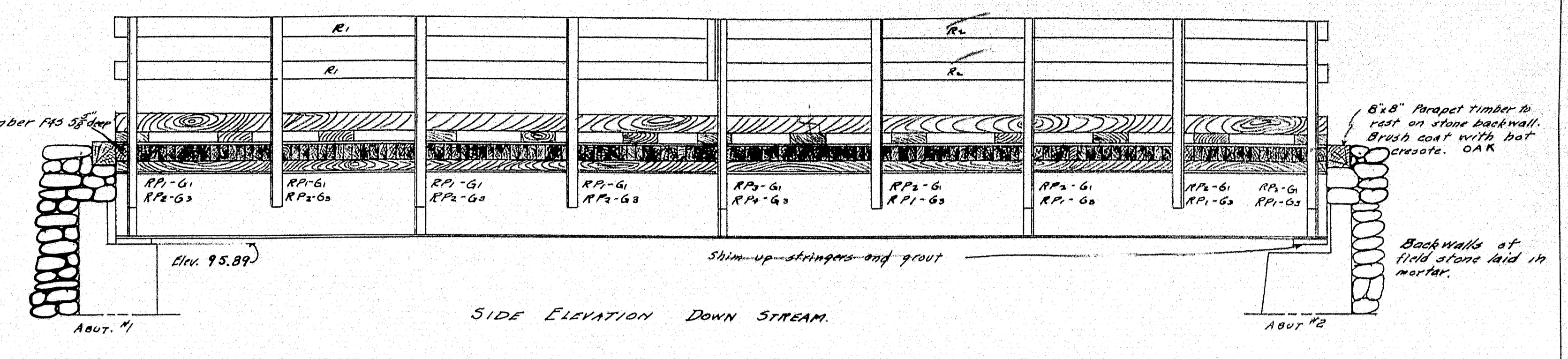
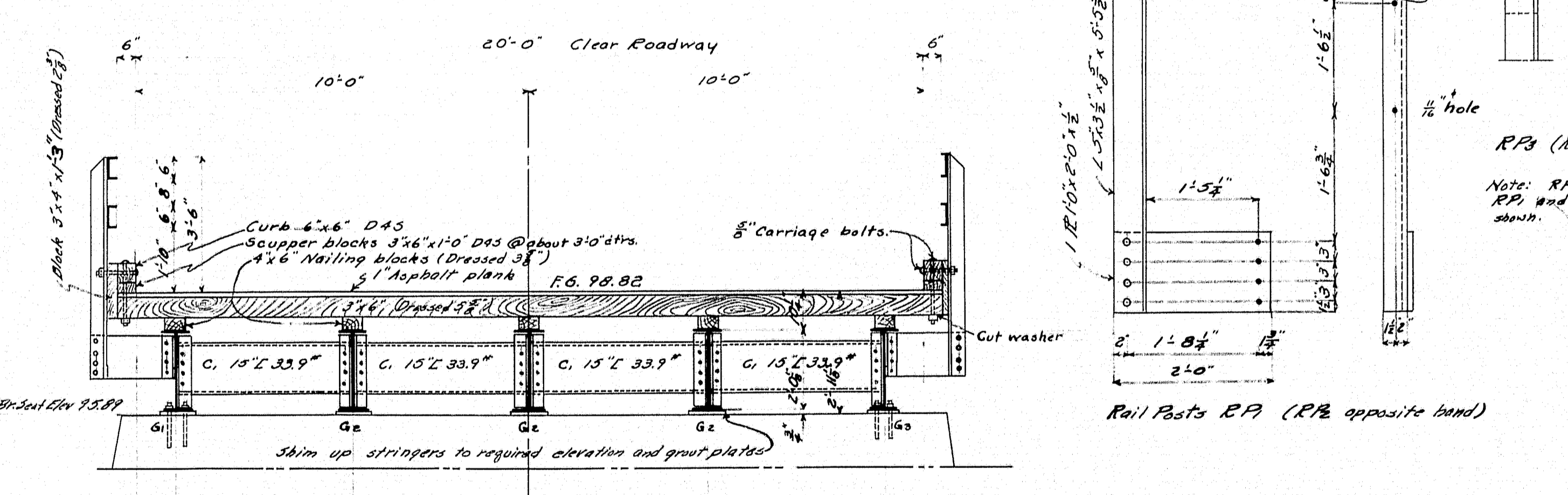
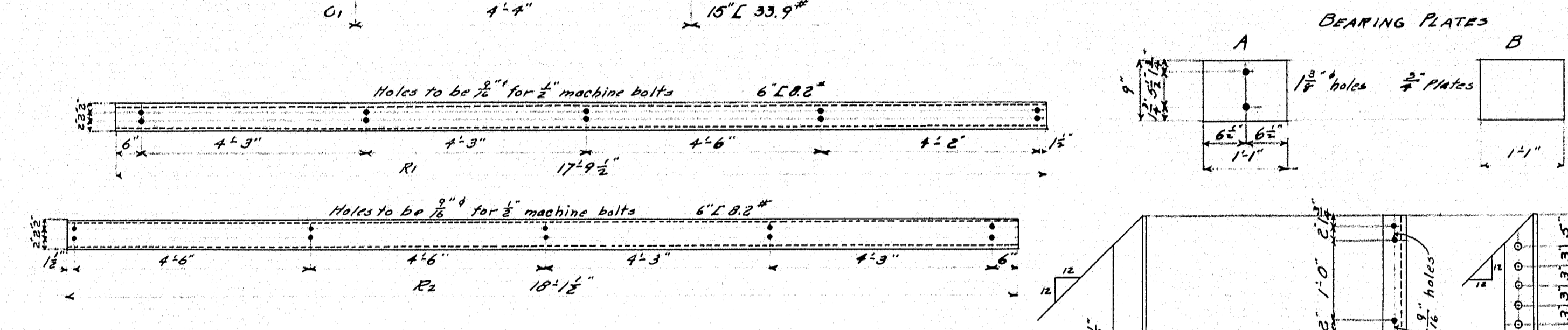
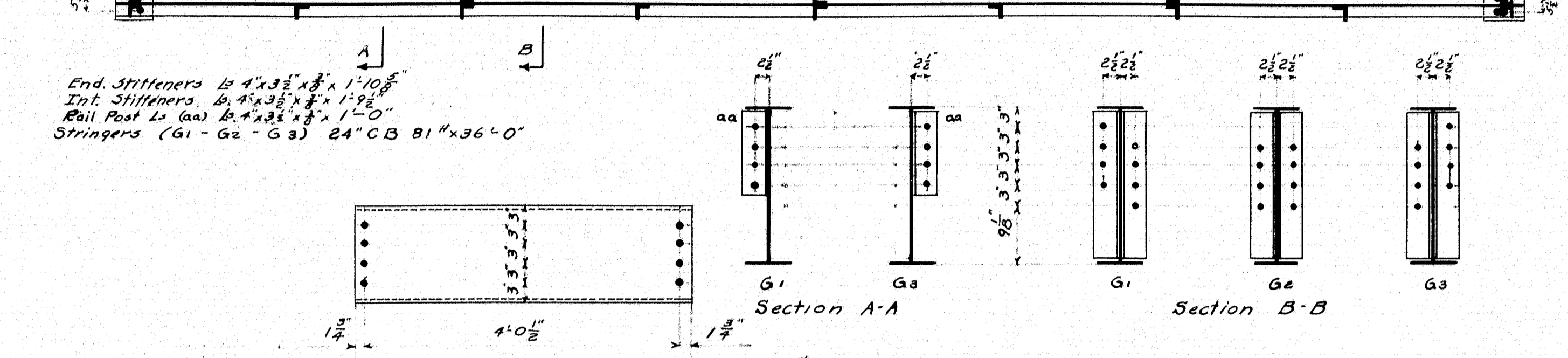
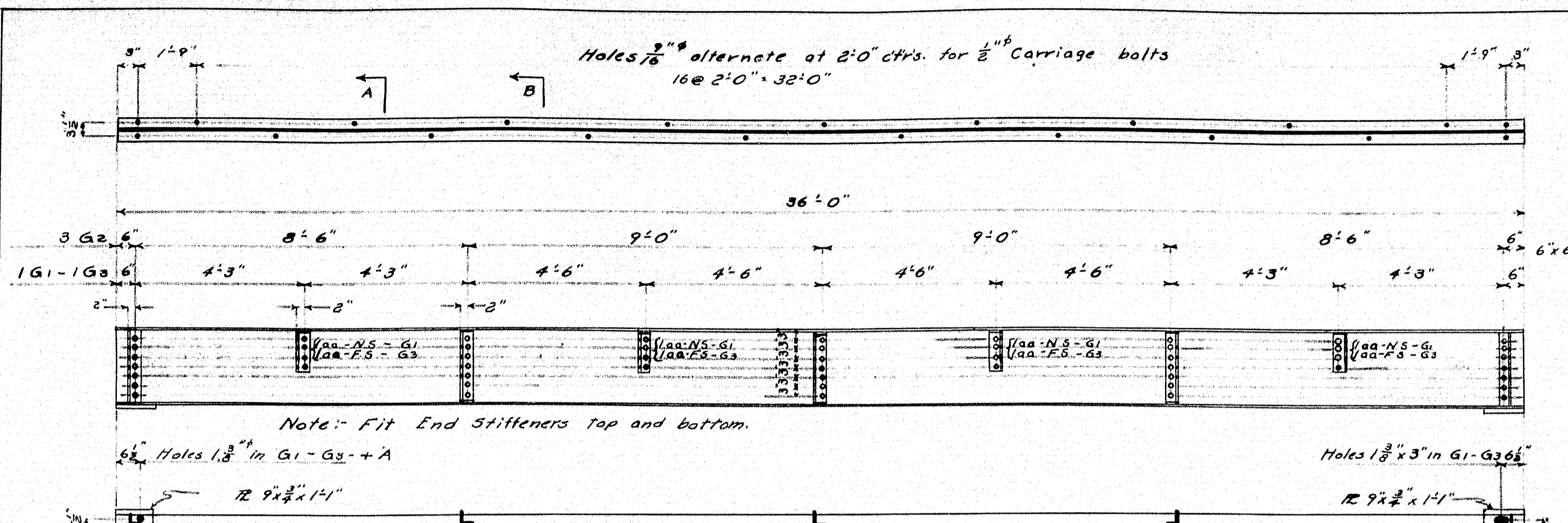


TOWN 04-16
BRIDGE 2934

MAINE HIGHWAY COMMISSION
BRIDGE DIVISION
WEYMOUTH BRIDGE
OVER
SANDY RIVER
IN THE TOWN OF
MADRID
FRANKLIN COUNTY

EXISTING SUBSTRUCTURE DETAILS
SHEET 1 OF 2 AUGUSTA, ME. MAR. 25, 1932

0 1 2 3 4 5 INCHES



STEEL				MATERIAL			
MARK	No. REQD	LOCATION	MARK	No. REQD	LOCATION	SIZE	QUANTITY
G1	1	Ext. Stringer D.S.	A	4	Bearing Plates Bt. Stringers	4" x 6"	180 lin. ft.
G2	3	Int. Stringers	B	6	Bearing Plates Int. Stringers	3" x 6" x 2'-0"	161 pos.
G3	1	Ext. Stringer U.S.	D	8	Anchor Bolts	3" x 6" x 1'-0"	26
G1	20	Diaphragms				6" x 6"	72 lin. ft.
RP1	8	Rail Posts				3" x 4" x 1'-3"	18
RP2	8	Rail Posts				Asphalt Plank	756 sq. ft.
RP3	1	Rail Post				6" x 6" x 2'-0"	2
RP4	1	Rail Post				8" x 8" x 2'-0"	2
R1	4	Rail					
R2	4	Rail					

All quantities net

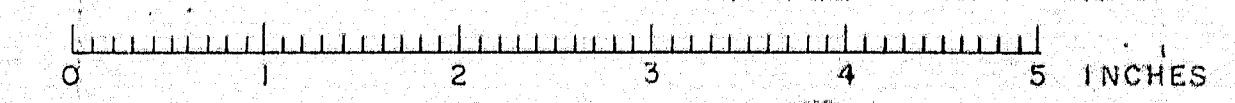
Notes:-
All rivets to be $\frac{3}{8}$ ", all bolts to be $\frac{1}{2}$ " except as noted.
Shop paint - One coat red lead and oil.
Specifications: Maine Highway Commission 1920 Bridge Division.
Paint Shop at ... to be in contact with earth and stone
backwall with asphalt.
All timber to be native spruce, unless noted.
Field connections $\frac{3}{4}$ " turned bolt, one lock washer each.

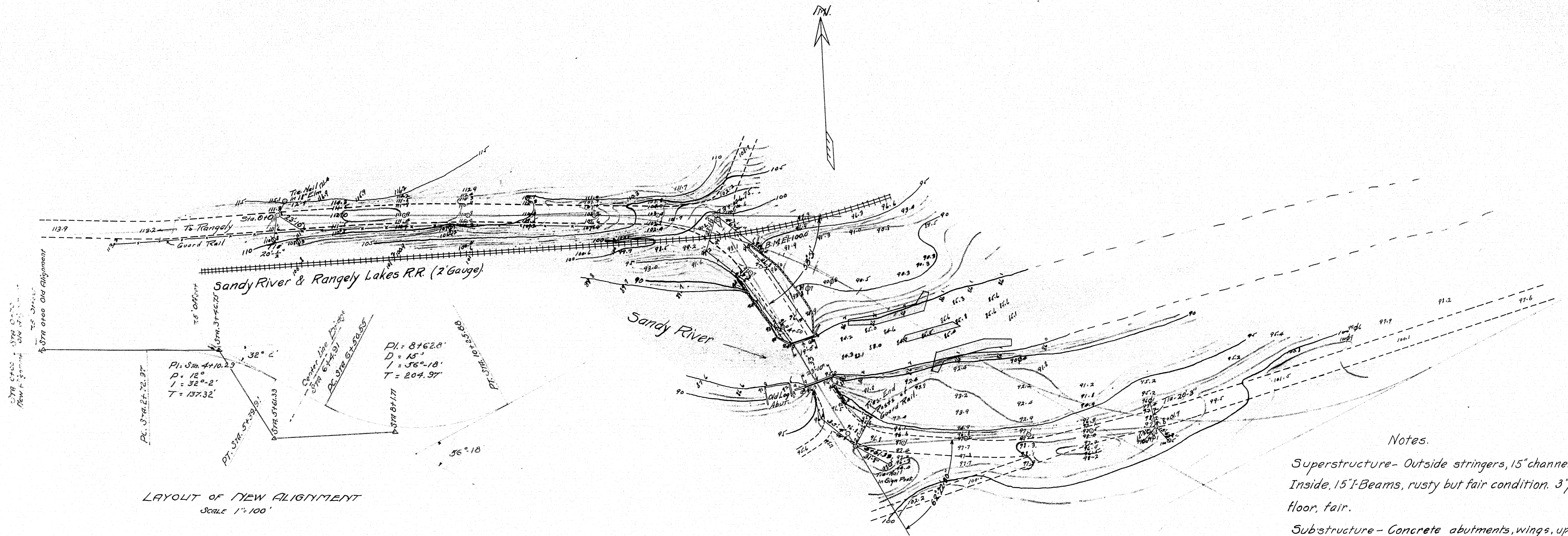
Town 04-16
Bridge 2934

MAINE HIGHWAY COMMISSION
BRIDGE DIVISION

WEYMOUTH BRIDGE
OVER
SANDY RIVER
IN THE TOWN OF
MADRID FRANKLIN COUNTY
BRIDGE DETAILS

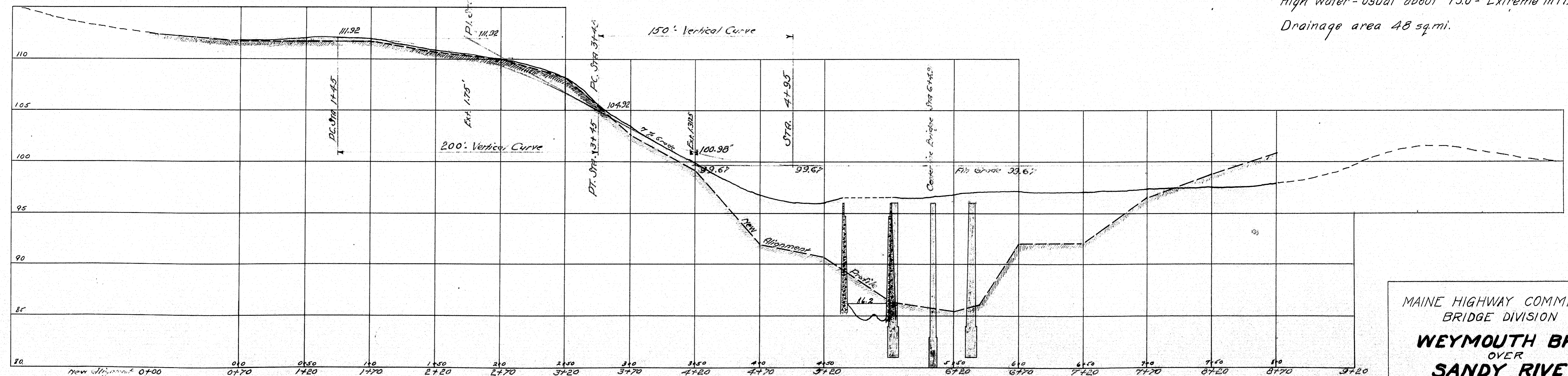
SHEET 2018 AUGUSTA, ME. APRIL 5, 1932.





LAYOUT OF NEW ALIGNMENT
Scale 1"=100'

PLAN Scale-1"=40'



PROFILE
Scales
H. 1"=40' V. 1"=5'

Notes.

Superstructure- Outside stringers, 15" channels
Inside, 15" I-Beams, rusty but fair condition. 3" plank
floor, fair.
Substructure- Concrete abutments, wings, upstream
sidewall, in fair condition. No penetration, rocky.
High water- usual about 950 - Extreme in 1927, 970
Drainage area 48 sq. mi.

MAINE HIGHWAY COMMISSION
BRIDGE DIVISION
WEYMOUTH BRIDGE
OVER
SANDY RIVER
TOWN OF
MADRID, FRANKLIN CO.
Sheet 1 of Augusta, Me. Jan. 11, 1930.

25-111

0 1 2 3 4 5 INCHES

STATE OF MAINE STATE HIGHWAY COMMISSION

PLAN AND PROFILE

STATE HIGHWAY "F" MADRID-SANDY RIVER FRANKLIN COUNTY FEDERAL AID PROJECT NO. N.R.H. 146-B

CONVENTIONAL SIGNS	
STATE OR NATIONAL LINE	-----
COUNTY LINE	-----
TOWN LINE	-----
UNFENCED PROPERTY	-----
FENCE	-----
RIGHT OF WAY LINE	-----
TRAVELED WAY	-----
RAILROAD	-----
RETAINING WALL	-----
SURVEY LINE	-----
CULVERT	-----
DROP INLET	-----
TROLLEY POLE	-----
POWER POLE	-----
TEL. POLE	-----
MARSH	-----
TREES	-----
STONE WALL	-----

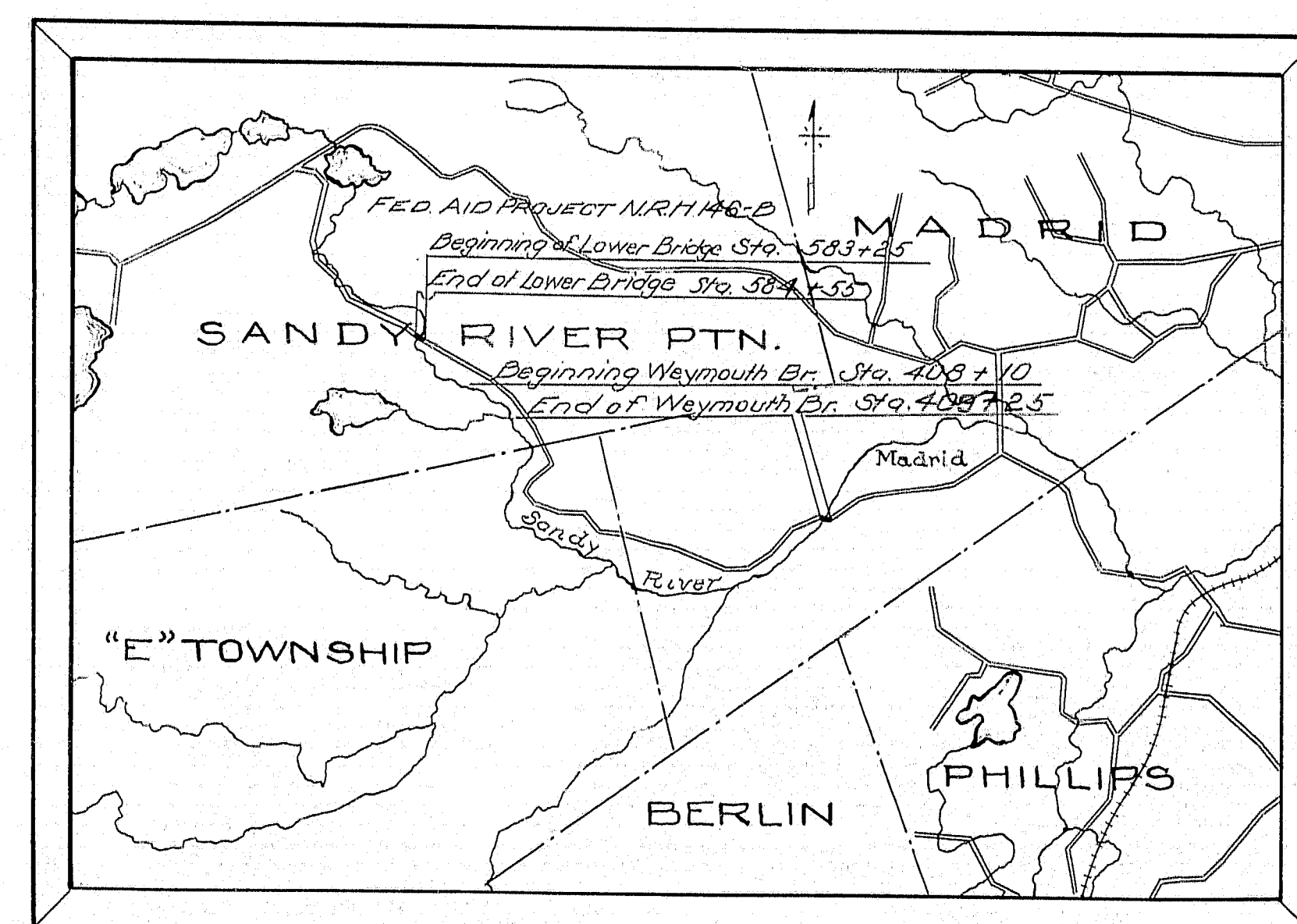
TOTAL LENGTH .046 MILES
 SCALES { PLAN 1 IN. = 20 FT.
 { PROFILE HOR. 1 IN. = 20 FT.
 VER. 1 IN. = 5 FT.

INDEX OF SHEETS	
SHEET NO. 1. TITLE PAGE	
WEYMOUTH BRIDGE	LOWER BRIDGE
Sheet No. 2 Survey Plan	Sheet No. 5 Survey Plan
Sheet No. 3 Substructure Plan	Sheet No. 6 Substructure Plan
Sheet No. 4 Superstructure Plan	Sheet No. 7 Superstructure Plan

All work contemplated by this contract shall be governed by, and in conformity with, the specifications accompanying these plans.

- CONCRETE CLASSIFICATION
 A Rails, wearing surface
 B Superstructure
 C Substructure

"The above specifications wherein not in conformity with the Federal Governments Rules and Regulations for work done under the National Industrial Recovery Act relative to the furnishing of all materials by the contractor, or otherwise not in conformity therewith, are hereby amended to meet said Rules and Regulations of the Federal Government."



PORTION OF FRANKLIN COUNTY
SCALE 1"=1 MILE

APPROVED:
MAINE STATE HIGHWAY COMMISSION

Franklin A. Peabody
CHAIRMAN
Edward J. ...
Paul J. ...
Frederick ...
CHIEF ENGINEER

APPROVED:
U. S. BUREAU OF PUBLIC ROADS

[Signature]
DISTRICT ENGINEER
[Signature]
CHIEF ENGINEER
[Signature]
DIRECTOR

STATE OF MAINE STATE HIGHWAY COMMISSION

PLAN AND PROFILE STATE HIGHWAY "F" MADRID-SANDY RIVER FRANKLIN COUNTY FEDERAL AID PROJECT NO. N.R.H. 146-B

CONVENTIONAL SIGNS		
STATE OR NATIONAL LINE	-----	
COUNTY LINE	-----	
TOWN LINE	-----	
UNFENCED PROPERTY	-----	
FENCE	-----	
RIGHT OF WAY LINE	-----	
TRAVELED WAY	-----	
RAILROAD	-----	
RETAINING WALL	-----	
SURVEY LINE	-----	
CULVERT	-----	
DROP INLET	-----	
TROLLEY POLE	-----	
POWER POLE	-----	
TEL. POLE	-----	
MARSH	-----	
TREES	-----	
STONE WALL	-----	

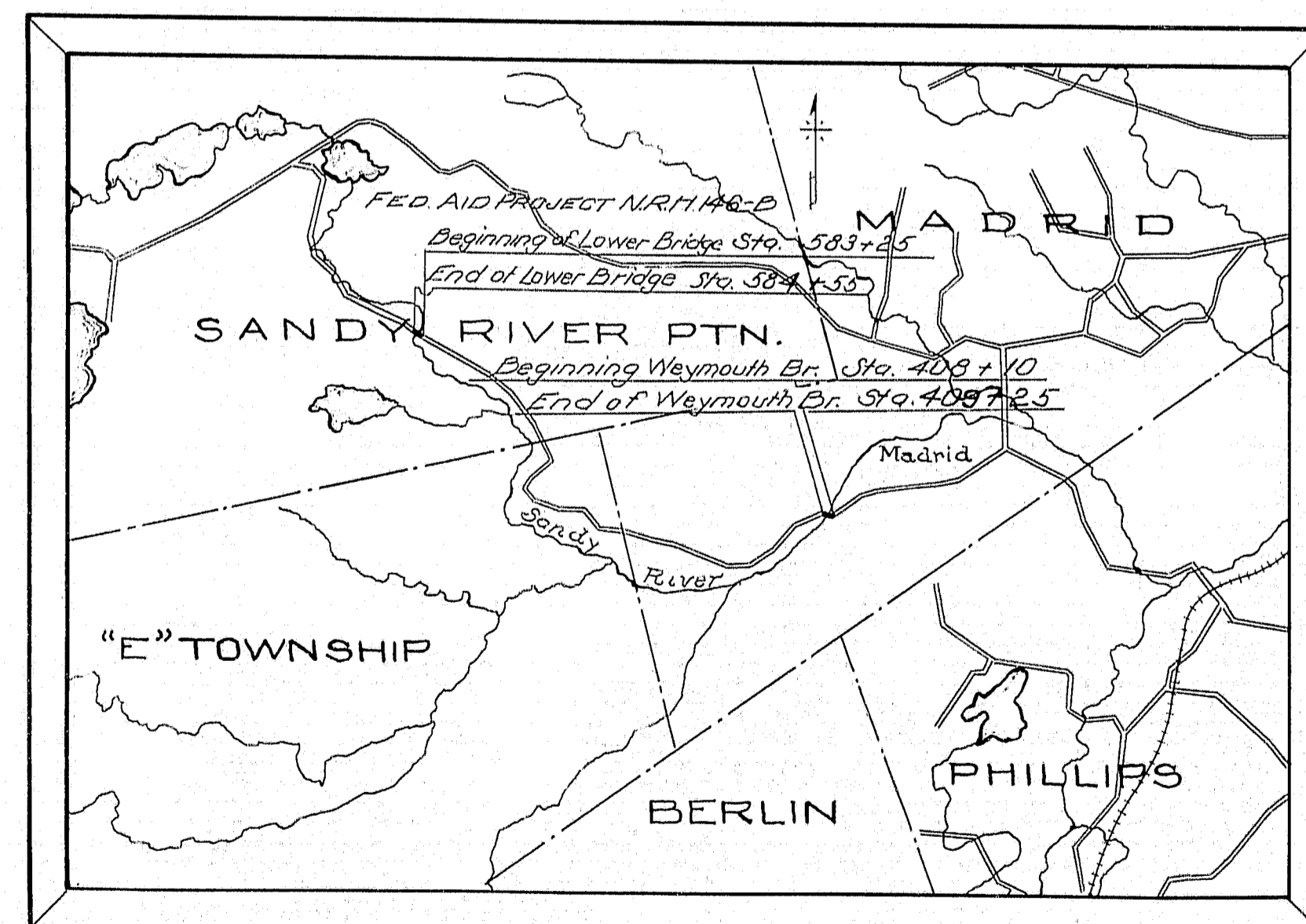
TOTAL LENGTH .046 MILES
 SCALES { PLAN 1 IN. = 20 FT.
 { PROFILE { HOR. 1 IN. = 20 FT.
 { VER. 1 IN. = 5 FT.

INDEX OF SHEETS		
SHEET NO. 1	TITLE PAGE	
WEYMOUTH BRIDGE		LOWER BRIDGE
Sheet No. 2	Survey Plan	Sheet No. 5
Sheet No. 3	Substructure Plan	Sheet No. 6
Sheet No. 4	Superstructure Plan	Sheet No. 7

All work contemplated by this contract shall be governed by, and in conformity with, the specifications accompanying these plans.

- CONCRETE CLASSIFICATION
 A Rails, wearing surface
 B Superstructure
 C Substructure

"The above specifications wherein not in conformity with the Federal Governments Rules and Regulations for work done under the National Industrial Recovery Act relative to the furnishing of all materials by the contractor or otherwise not in conformity therewith, are hereby amended to meet said Rules and Regulations of the Federal Government."



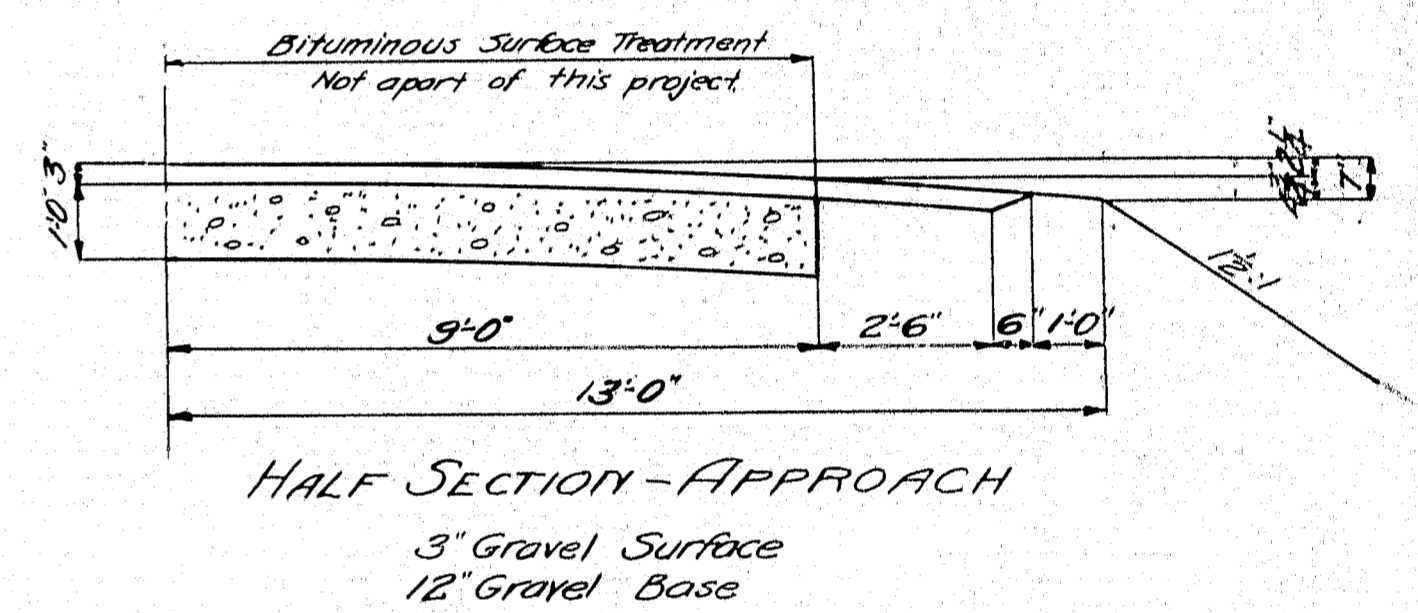
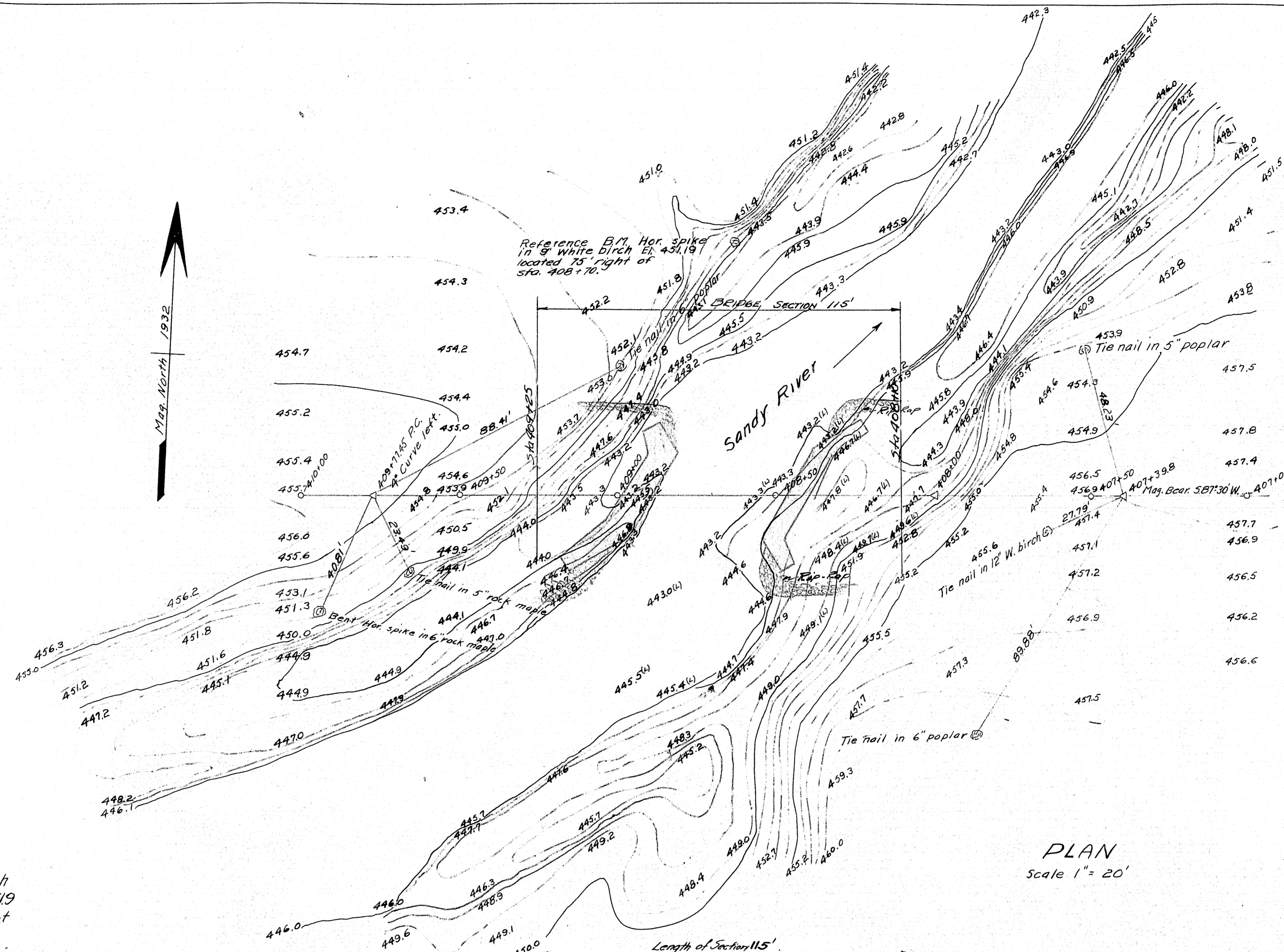
PORTION OF FRANKLIN COUNTY
SCALE 1" = 1 MILE

APPROVED:
MAINE STATE HIGHWAY COMMISSION

Frederic A. Peabody
CHAIRMAN
Edward J. ...
Paul J. ...
Frederic ...
CHIEF ENGINEER

APPROVED:
U. S. BUREAU OF PUBLIC ROADS

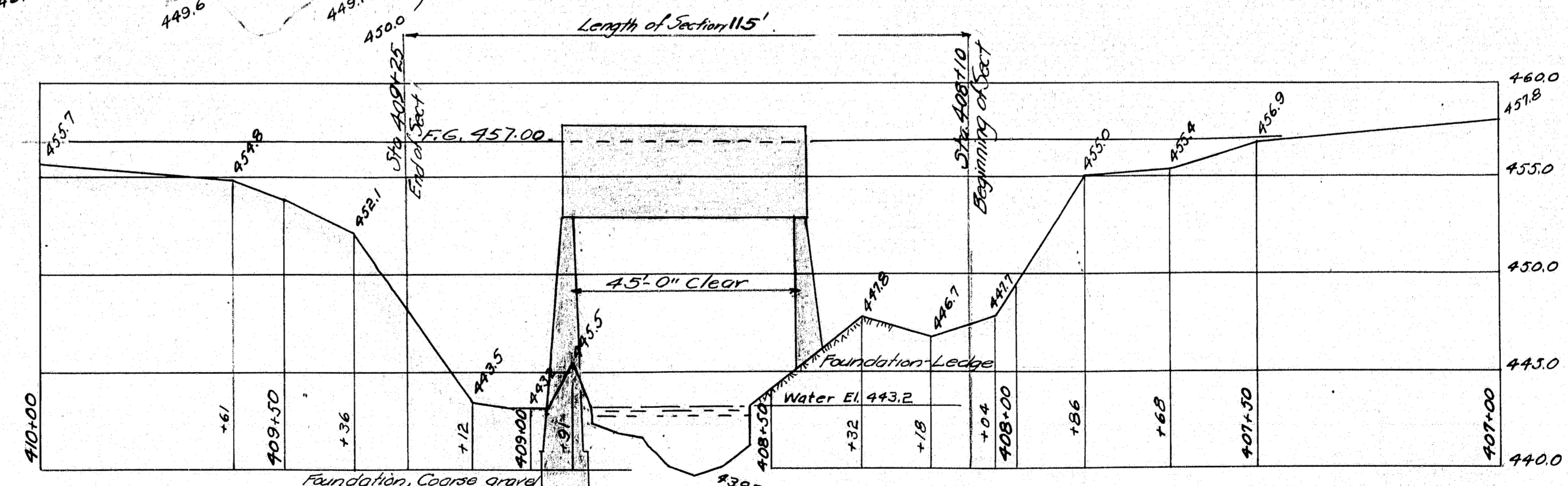
[Signature]
DISTRICT ENGINEER
[Signature]
CHIEF ENGINEER
[Signature]
DIRECTOR



PLAN
Scale 1" = 20'

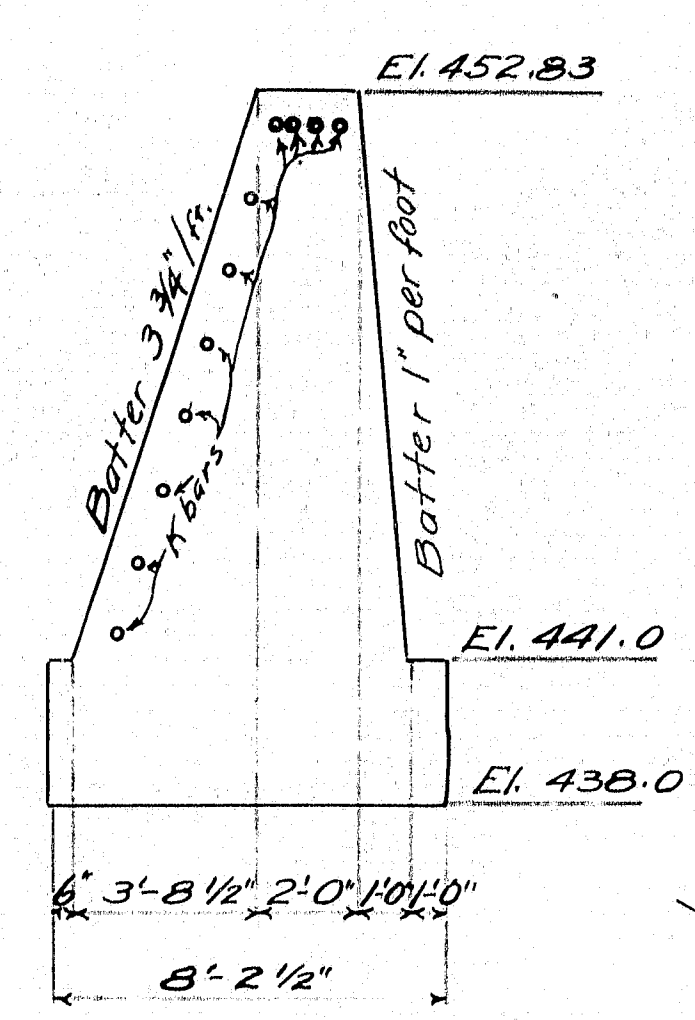
Highway B.M. # 40
Elev 460.63
Point on N.E. side of ledge
over → mark 110' left of
Sta. 406+40.

Notes -
Traffic Use existing bridge about 500' upstream.
Stream - Swift current. Rapids and falls of 15' drop just upstream of center line. High water of Sept. 1932 El. 451.9 3' above planking of present bridge. High water of 1927 reported at 3.5' above planking. For waterway study use former survey of existing bridge site.
Foundation - Ledge.

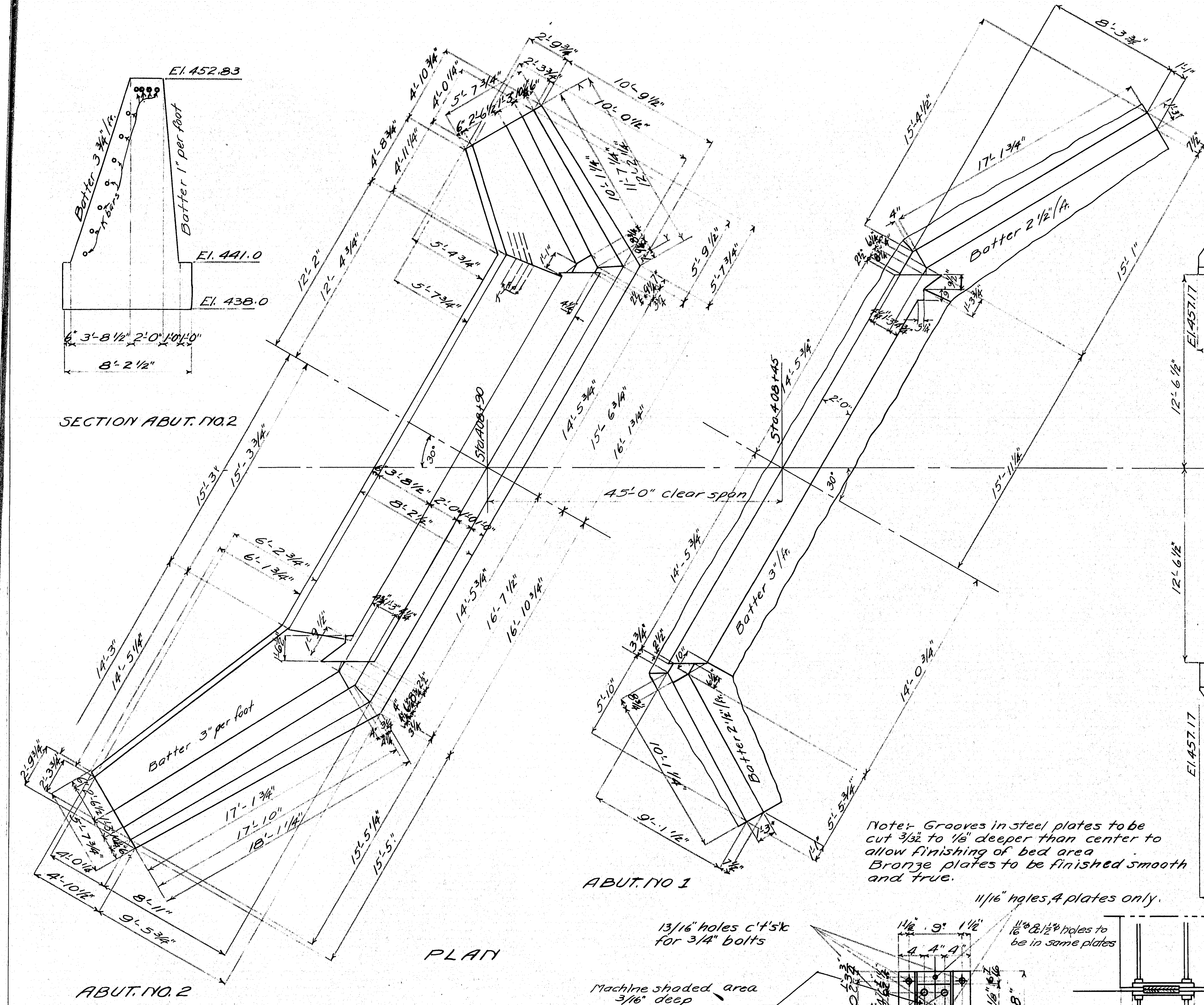


PROFILE
Scales Hor. 1" = 20' Vert. 1" = 5'

Town 04-16
Bridge 2934
MAINE HIGHWAY COMMISSION
BRIDGE DIVISION
WEYMOUTH BRIDGE
OVER
SANDY RIVER
IN THE TOWN OF
MADRID FRANKLIN CO.
SURVEY
Sheet 2 of 7 Augusta Me. December 1932



SECTION ABUT. NO. 2



ABUT. NO. 1

ABUT. NO. 2

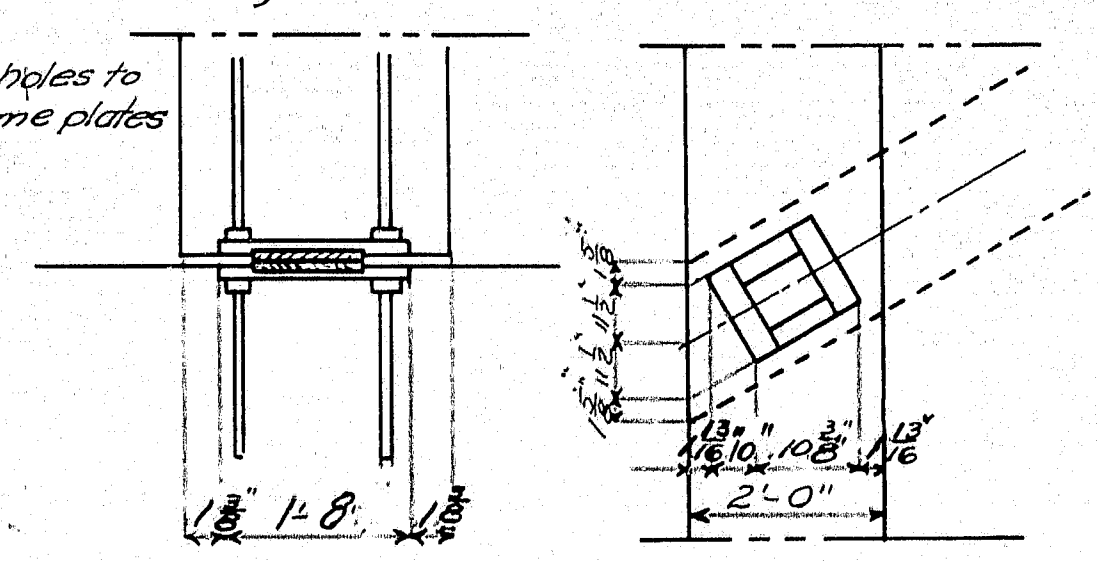
PLAN

Note: Grooves in steel plates to be cut $\frac{3}{32}$ to $\frac{1}{8}$ deeper than center to allow finishing of bed area. Bronze plates to be finished smooth and true.

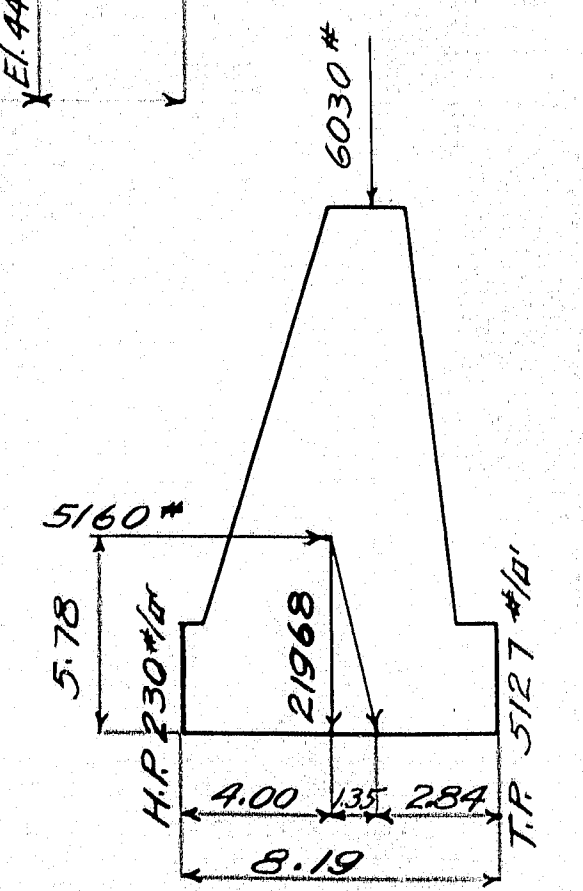
13/16" holes c't's k for 3/4" bolts
Machine shaded area 3/16" deep

1 1/2" holes 4 plates only

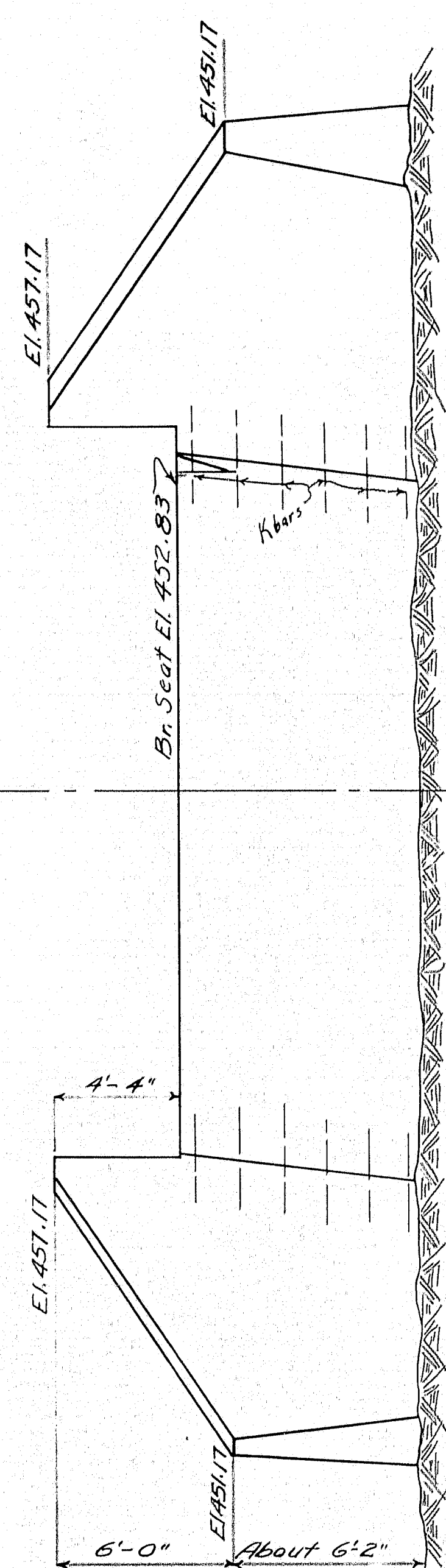
Required:
8 steel plates 12" x 3 1/4" x 1'-8"
8 phosphor bronze plates 7" x 3 1/2" x 7"
32 bolts 3/4" x 1'-0" c't's k heads, threaded full length with nuts.



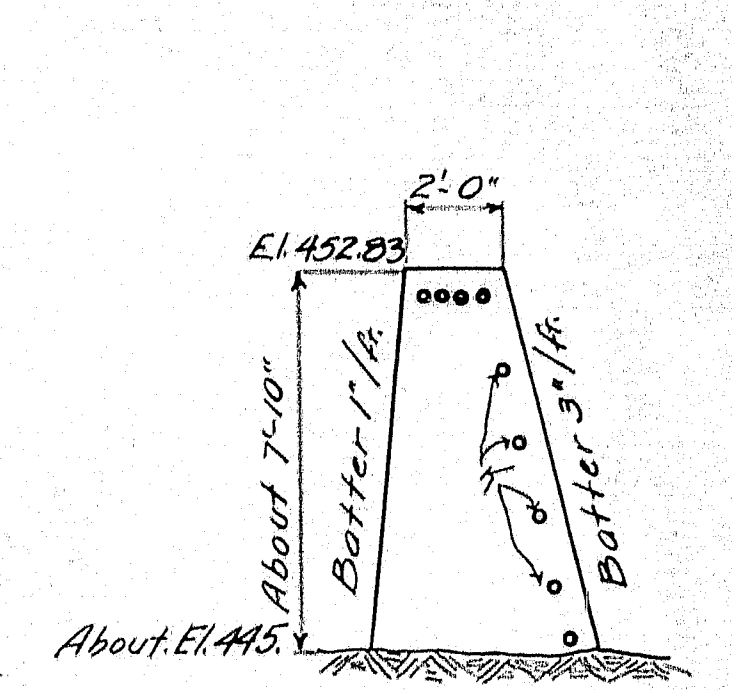
PLAN VIEW
Bearing Plate on Abut.



Analysis Abut No. 2

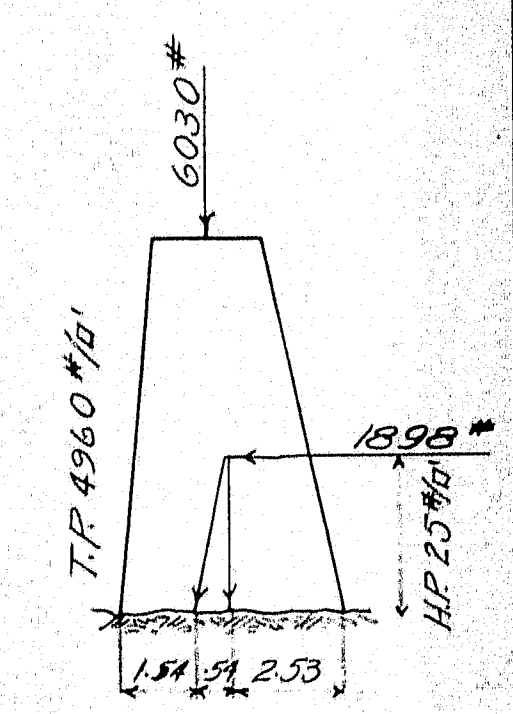


FRONT ELEVATION ABUT. NO. 2
Ft. 2 to Roadway



Sect Abut. No. 1

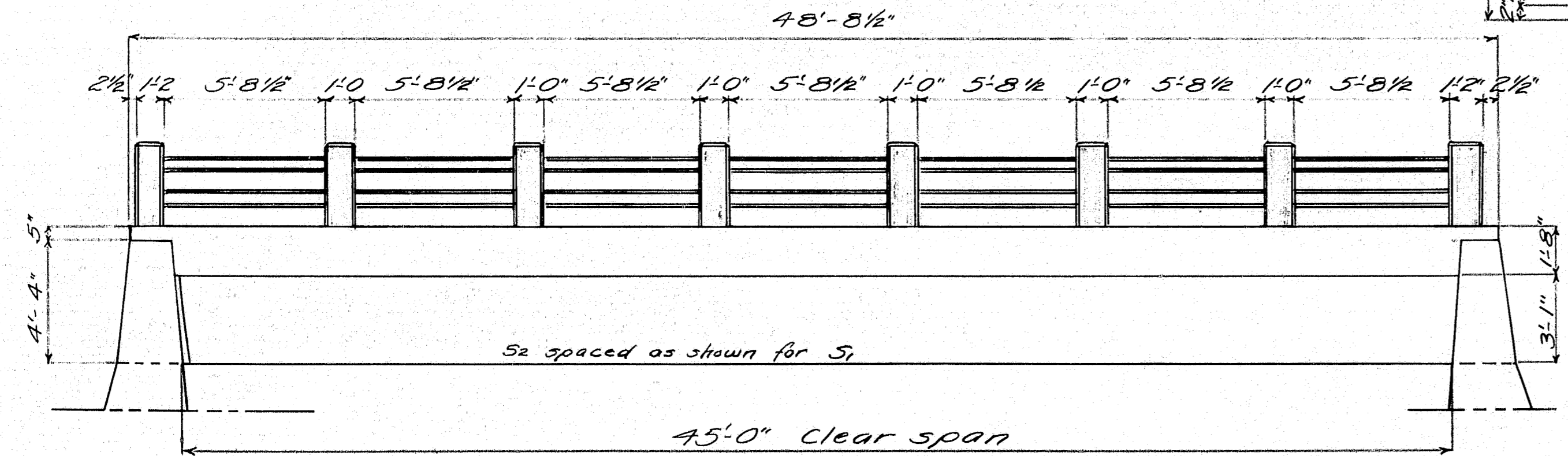
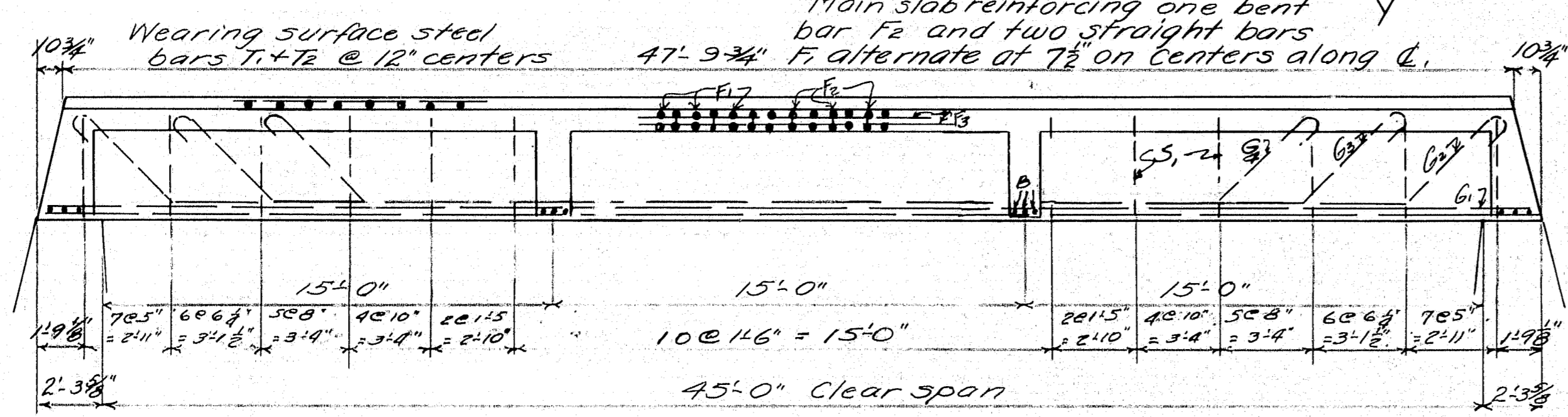
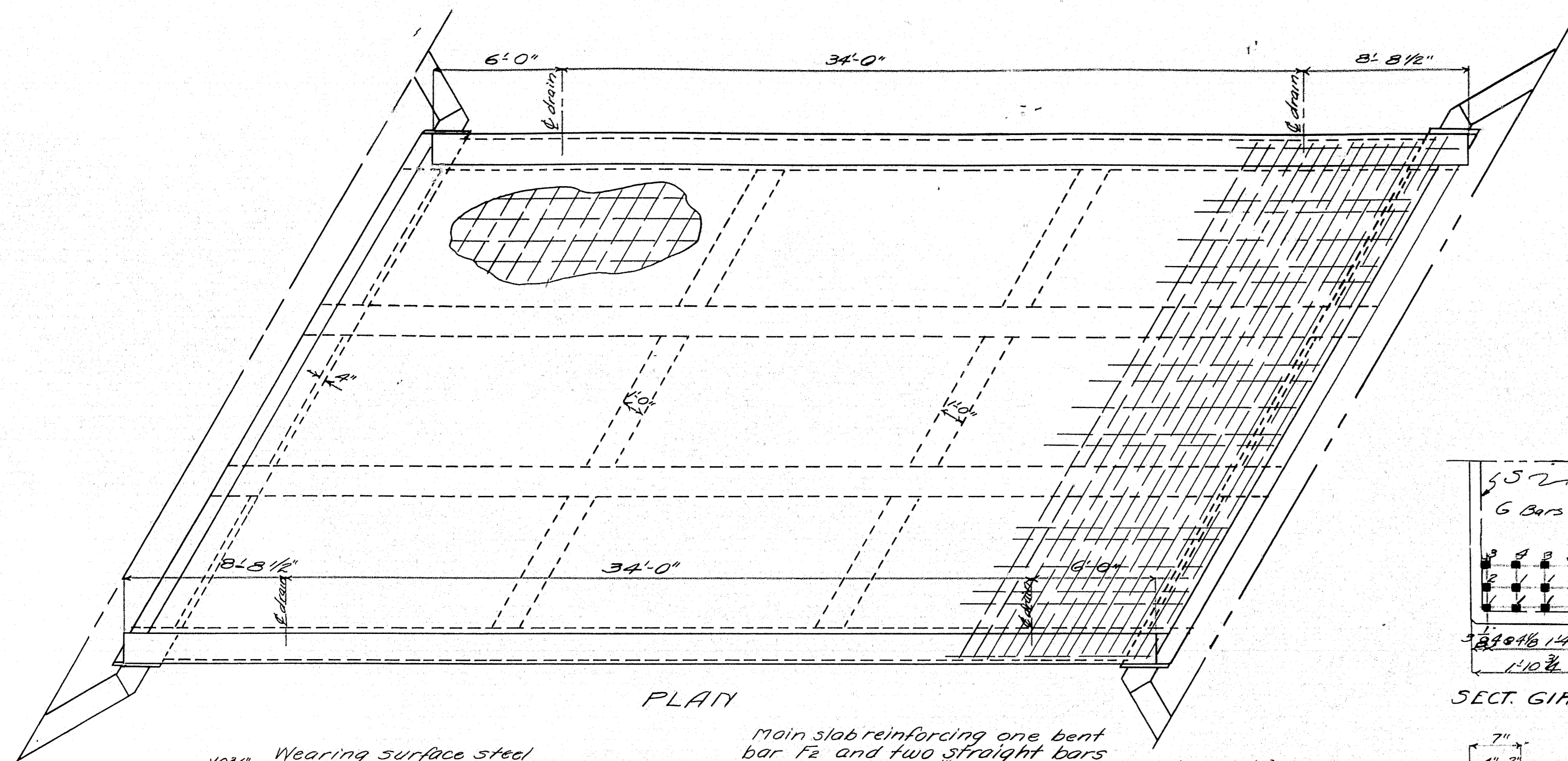
REAR ELEVATION ABUT. NO. 1
Ft. 2 to Roadway



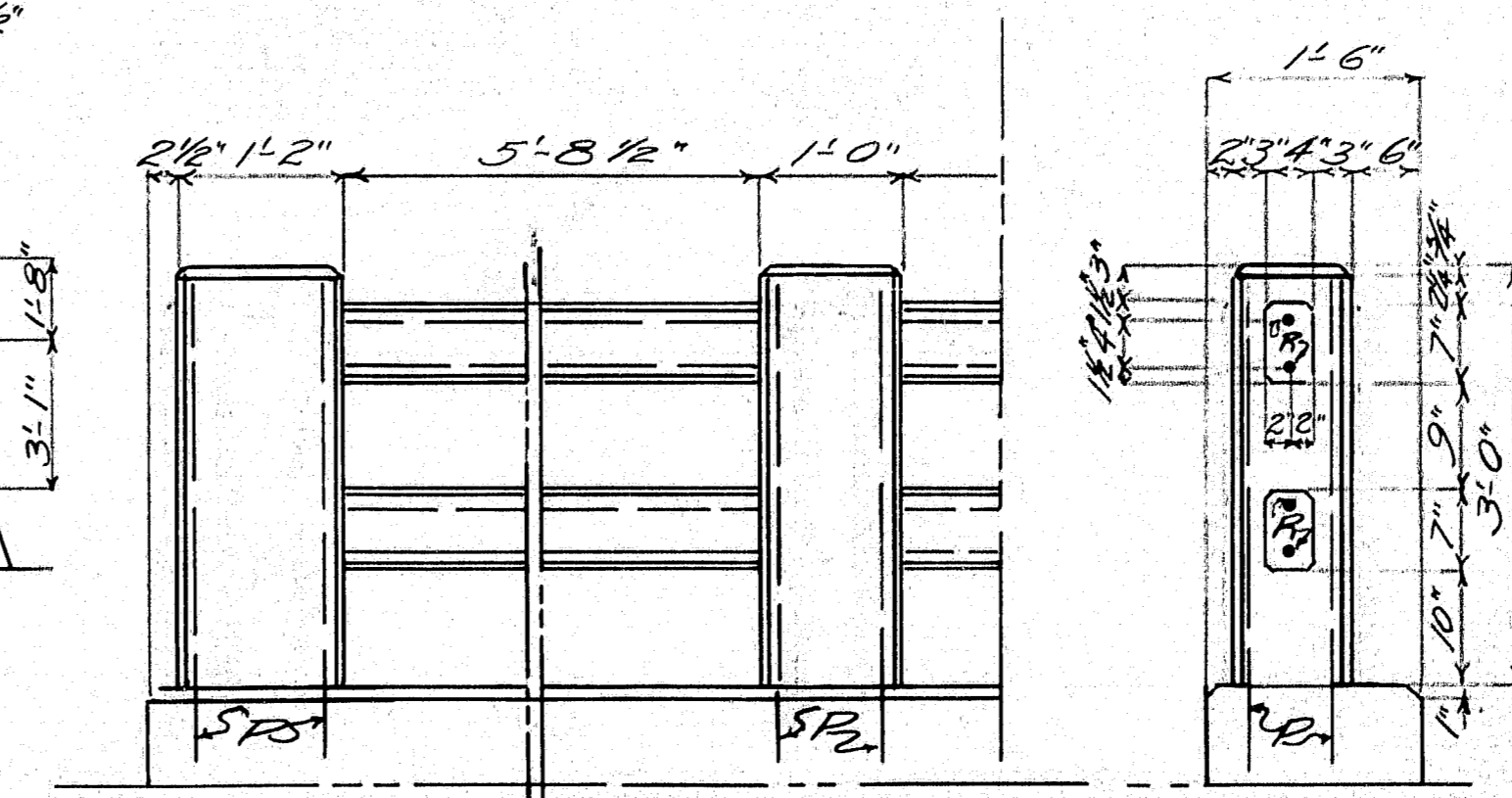
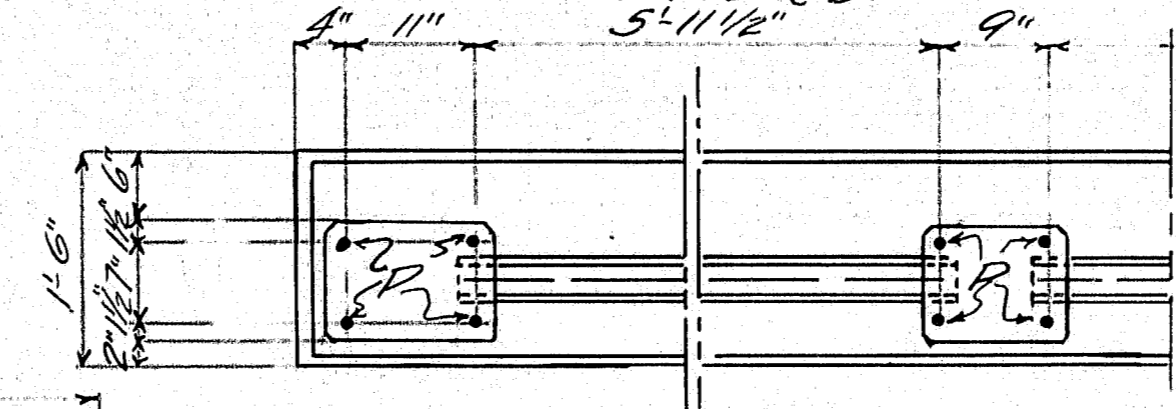
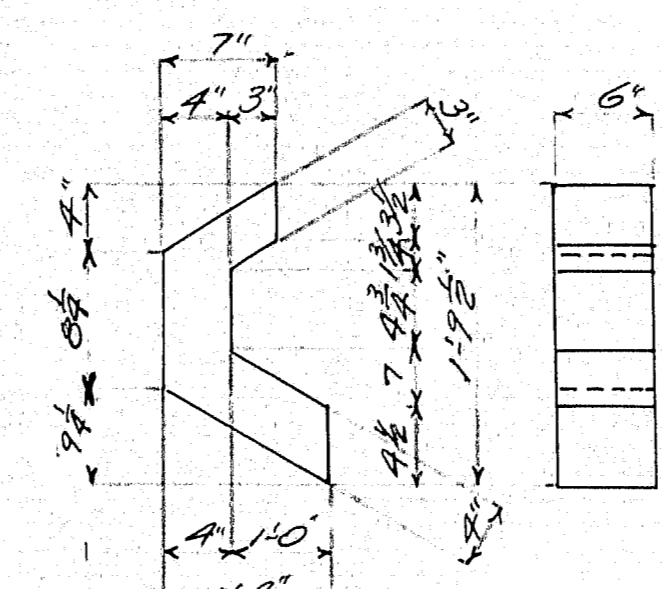
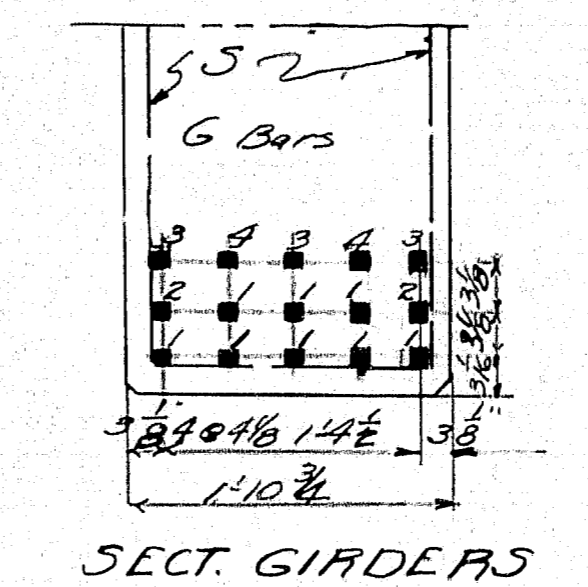
Analysis Abut No. 1

Loading H 15
R = 18,000 #/sq ft
R = 750 #/sq ft
n = 12

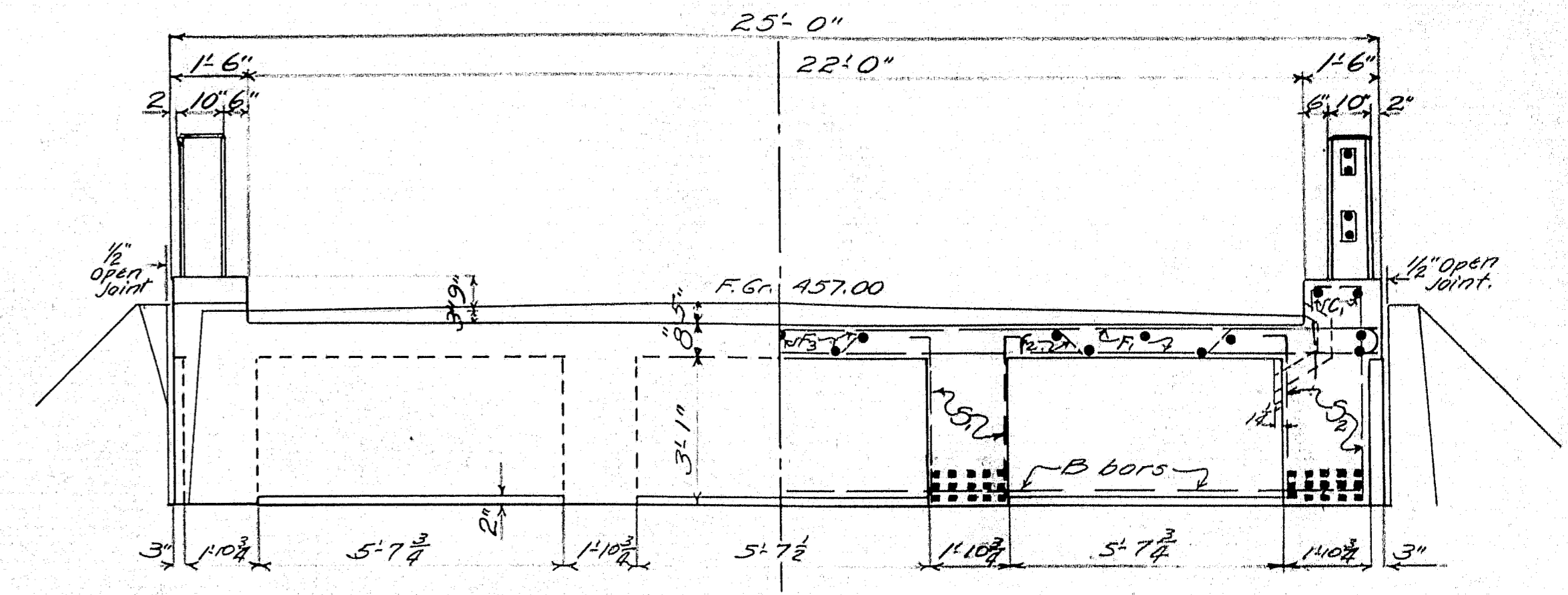
Town 04-16
Bridge 2934
MAINE HIGHWAY COMMISSION
BRIDGE DIVISION
WEYMOUTH BRIDGE
OVER
SANDY RIVER
IN THE TOWN OF
MADRID, FRANKLIN CO.
SUBSTRUCTURE PLAN
Sheet 3 of 7 Augusta Me. Feb. 1933



Note: Cover the 1/2" vertical slot and the 2" opening between the superstructure and substructure on the back side with two layers of heavy roofing. Coat the concrete and the back side of each layer of roofing as applied with hot tar or asphalt. Roofing to be 10" wide. The area to be covered is to be recessed 1/4" by nailing strips to the forms before the concrete is placed.



Curb and slab to be cast together. Steel for posts to be set in curb. Precast rail bars in lengths of 6'-1 1/2". Place rail bars in position with ends projecting into post forms 2 1/2". Wrap end 6" with two thicknesses of heavy roofing felt. Fold in ends and when post forms are removed cut away all roofing exposed. Posts to be 16" thick. Chamfer all exposed edges of concrete 1/2" unless otherwise shown.



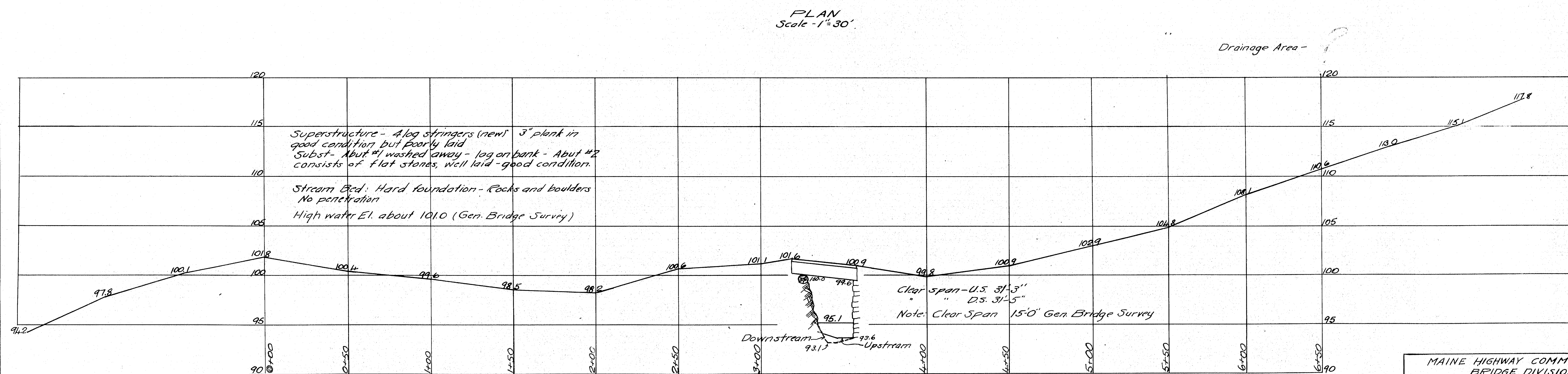
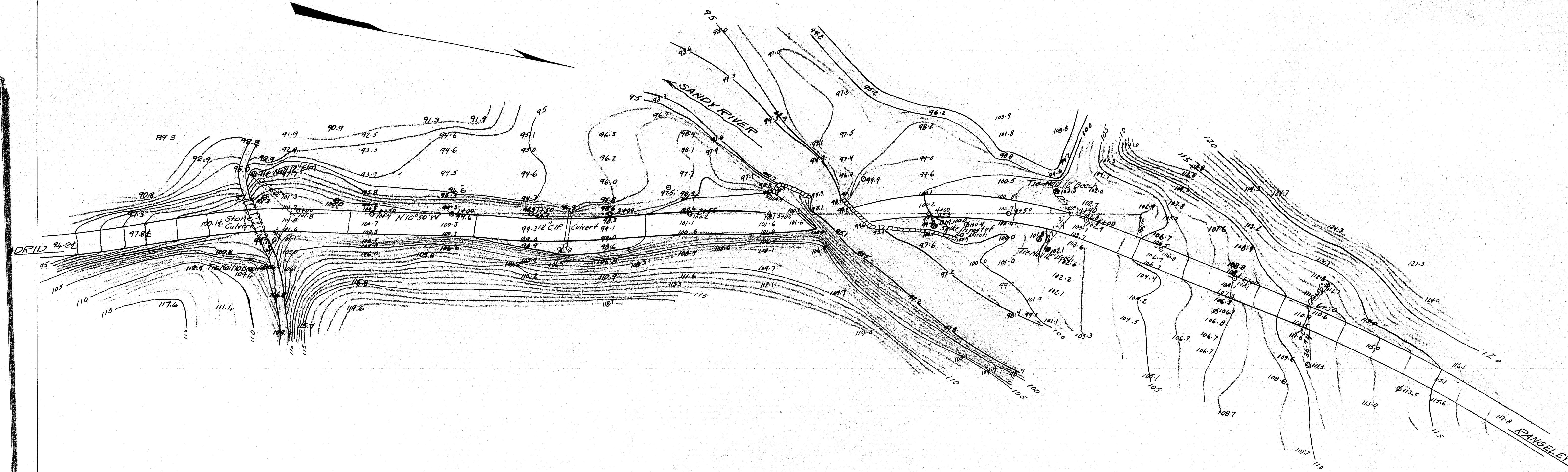
MARK	SIZE	No.	A	B	C	D	LENGTH	LOCATION
G ₂	1 1/2"	8	40'-9"	3'-1 1/2"	2'-9"	4'-1 1/2"	51'-7 1/2"	711 Girders
G ₃	1 1/2"	12	35'-0 1/2"	2'-10 1/2"	2'-6"	3'-7 1/2"	45'-2 1/2"	"
G ₄	1 1/2"	8	29'-4"	2'-10 1/2"	2'-6"	3'-7 1/2"	39'-5 3/4"	"

MARK	SIZE	No.	LENGTH	LOCATION
F	3/8"	76	28'-8"	Slab
F ₂	1/2"	19	47'-7 3/4"	"
G ₁	1 1/2"	32	49'-0"	Beams
C ₁	1 1/2"	4	48'-5"	Curbs
T	3/8"	47	25'-4"	Wearing surface
D	3/8"	22	47'-7 3/4"	"
K	3/4"	40	8'-0"	Abuts.
P	3/4"	64	4'-0"	Posts
R	3/8"	56	6'-0 1/2"	Posts
B	3/4"	12	28'-0"	Cross beams

Alsteel to be plain round and square bars of structural grade. Dimensions to & of bars.

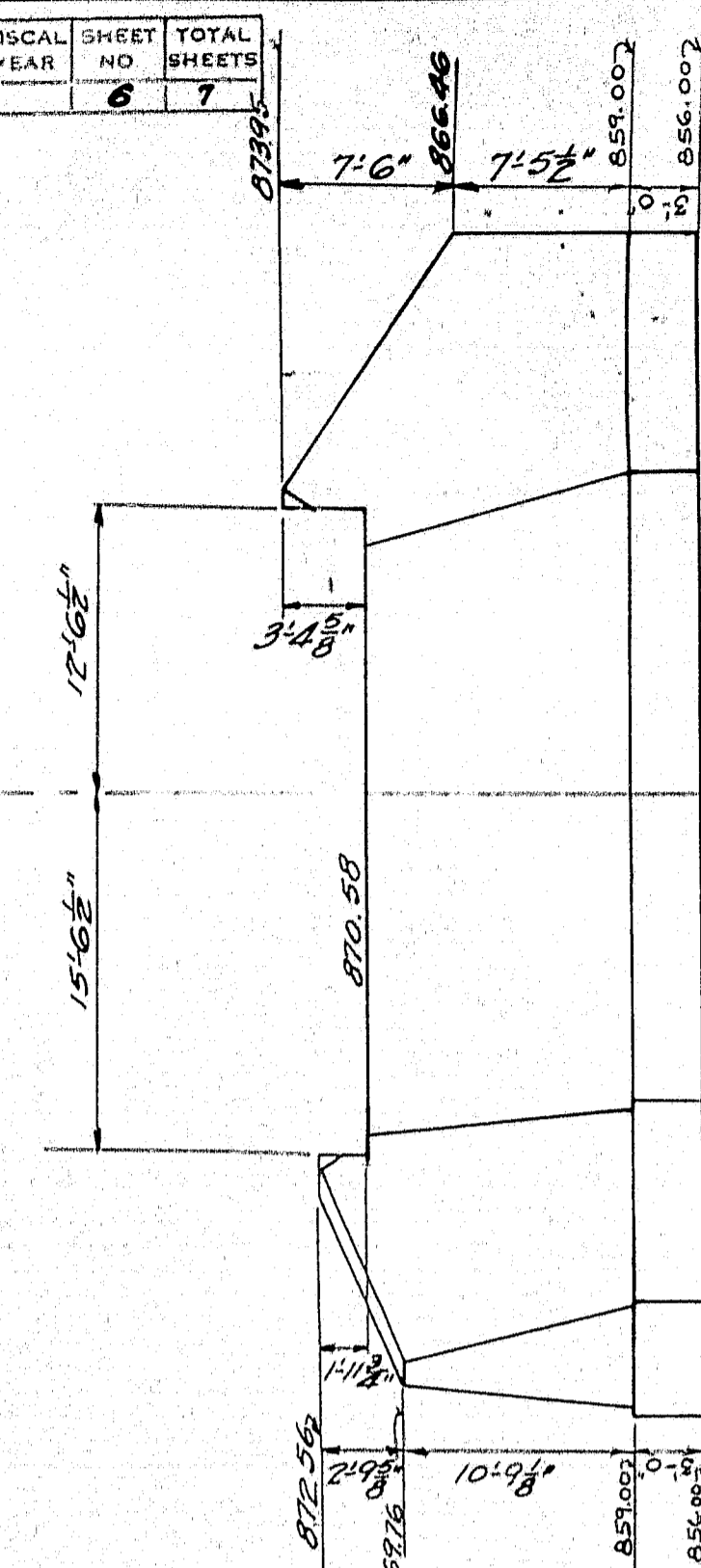
Loading H15

Town 04-16
Bridge 2934
MAINE HIGHWAY COMMISSION
BRIDGE DIVISION
WEYMOUTH BRIDGE
OVER
SANDY RIVER
IN THE TOWN OF
MADRID, FRANKLIN CO.
SUPERSTRUCTURE PLAN
Sheet # of 7 Augusta, Me. Feb. 1933.

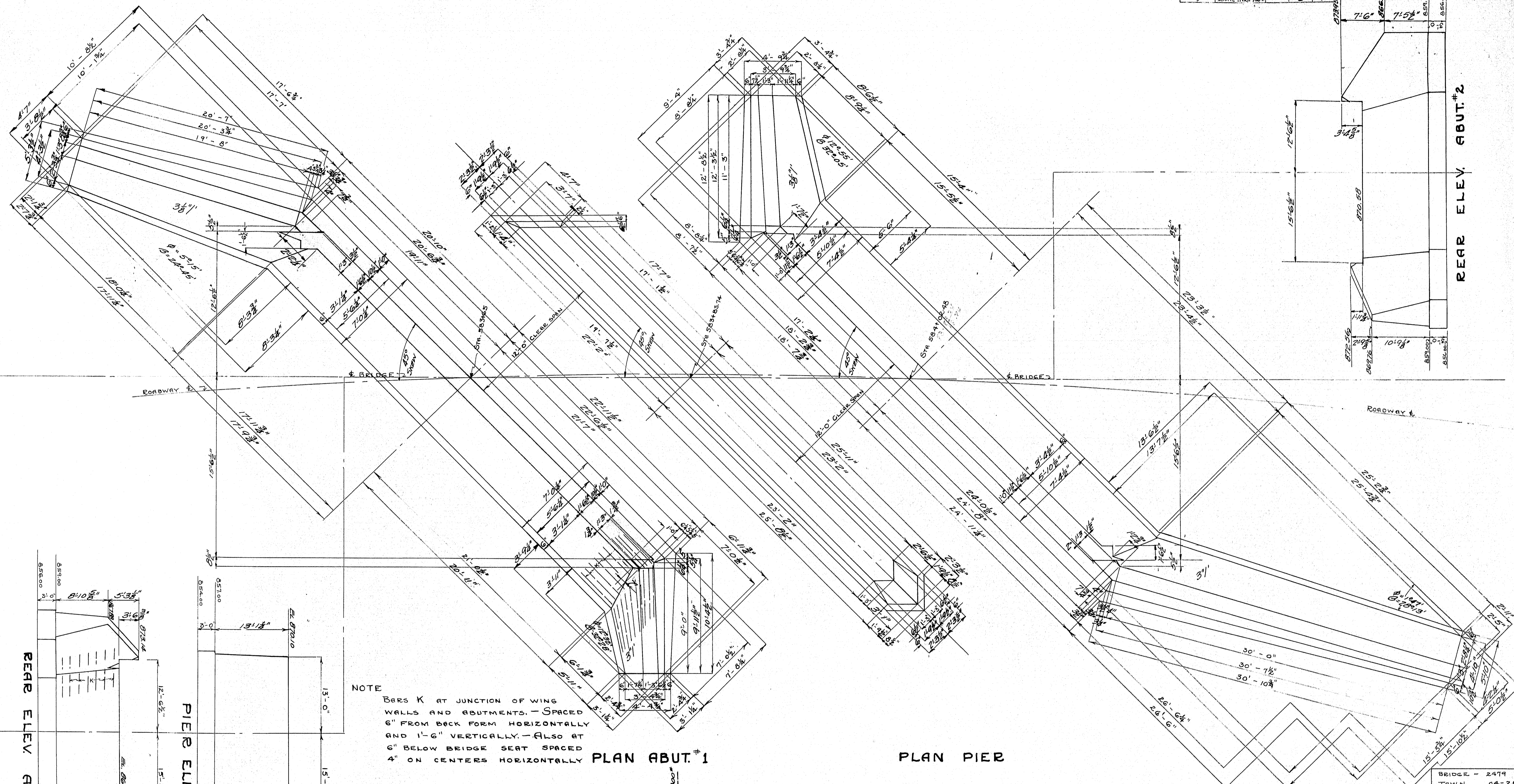


MAINE HIGHWAY COMMISSION
BRIDGE DIVISION
LOWER BRIDGE
OVER
SANDY RIVER
IN THE PLANTATION OF
SANDY RIVER FRANKLIN CO.
SURVEY PLAN
Sheet 1 of Augusta, Me. Jan. 8, 1928.

FED. ROAD DIST. NO.	STATE	FED. AID PROJ. NO.	FISCAL YEAR	SHEET NO.	TOTAL SHEETS
9	MAINE	199	1932	6	7



REAR ELEV. ABUT. #2



PLAN ABUT. #1

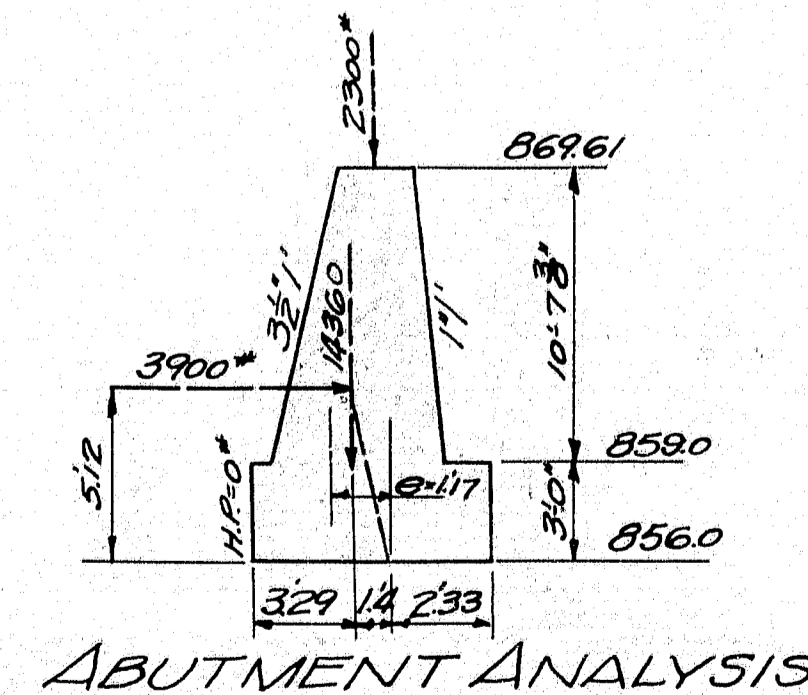
PLAN PIER

PLAN ABUT. #2

REAR ELEV. ABUT. #1

PIER ELEV.

NOTE
BARS K AT JUNCTION OF WING WALLS AND ABUTMENTS. - SPACED 6" FROM BACK FORM HORIZONTALLY AND 1'-6" VERTICALLY. - ALSO AT 6" BELOW BRIDGE SEAT SPACED 4" ON CENTERS HORIZONTALLY



ABUTMENT ANALYSIS

BRIDGE - 2479
TOWN 04-25
MAINE HIGHWAY COMMISSION
BRIDGE DIVISION
LOWER BRIDGE
OVER
SANDY RIVER
IN THE PLANTATION OF
SANDY RIVER
FRANKLIN COUNTY
SHEET 6 OF 7 AUGUSTA ME MARCH 17, 1932

